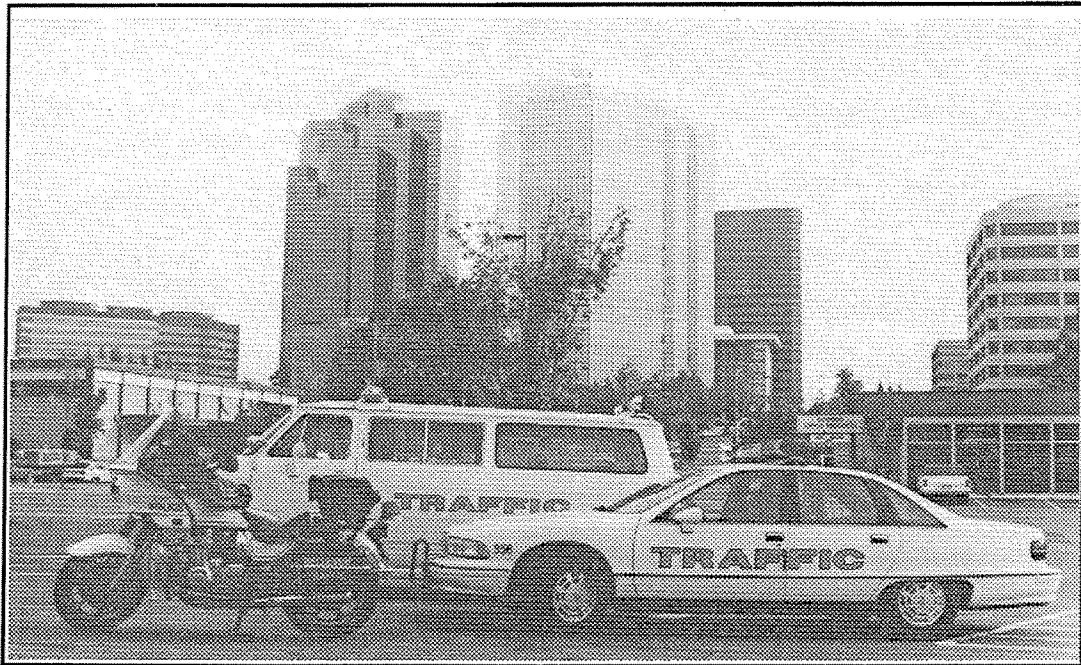


**TRAFFIC SECTION**  
**1991 OPERATIONAL SUMMARY**



**City of Bellevue Police Department**

**Operations Division**





## INTRODUCTION

The Police Traffic Operational Summary is a yearly publication which is prepared by the Bellevue Police Department Traffic Section and is intended to summarize Police Traffic Operations. This edition outlines 1991 activities.

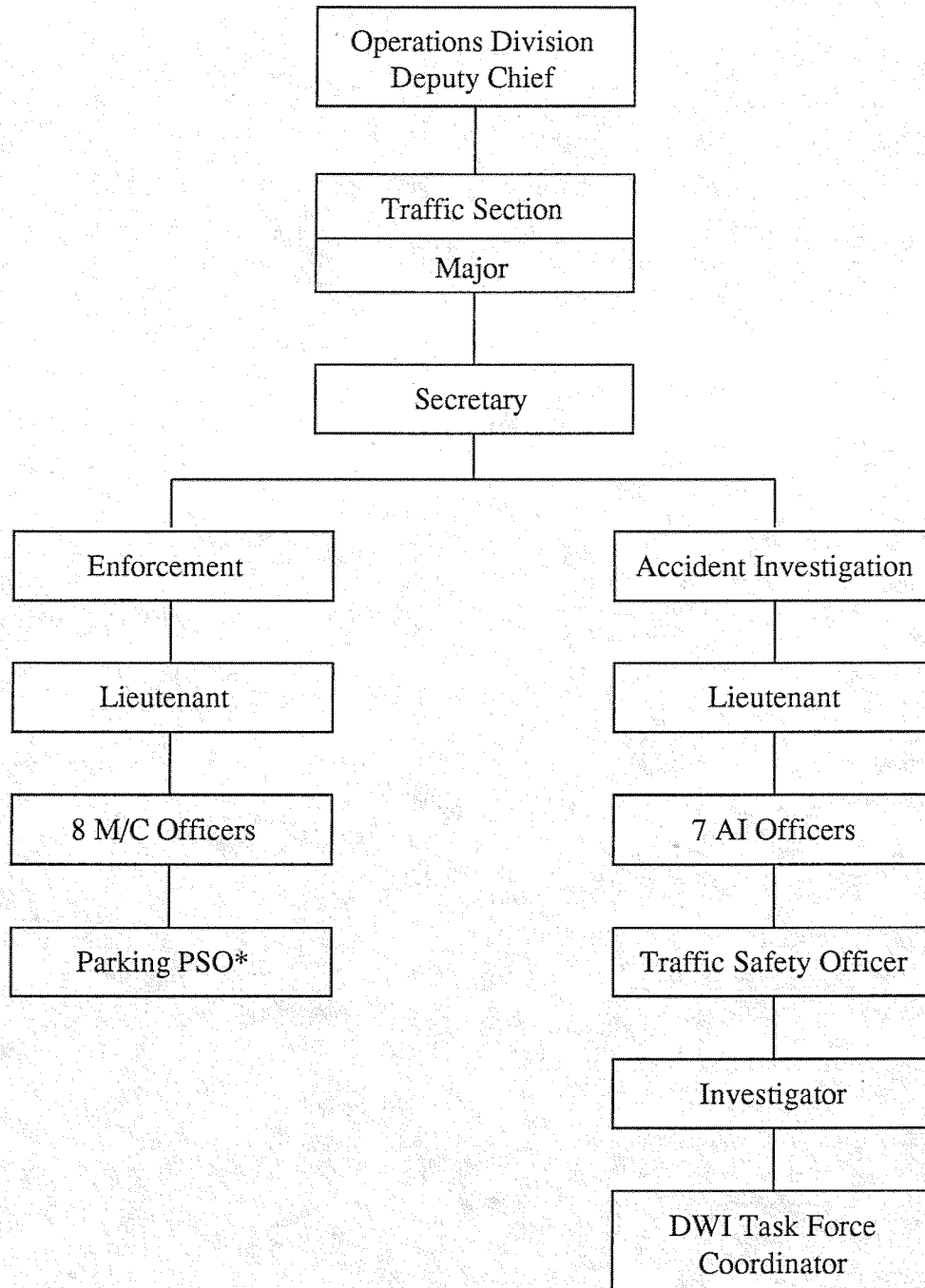
Sources of data reported in this document include Washington State Traffic Accident Reports, Monthly Accident/Citation Summaries and Traffic Officer Activity Summaries.

**POLICE TRAFFIC OPERATIONAL SUMMARY  
FOR THE 1991 CALENDAR YEAR**

<u>TABLE OF CONTENTS</u>	<u>PAGE</u>
ORGANIZATIONAL CHART .....	1
OVERVIEW .....	2
 TRAFFIC ACCIDENTS	
Total Accidents .....	4
Fatal Accidents .....	4
Injury Accidents .....	4
Property Damage Only Accidents .....	4
Street vs. Private Property Accidents .....	4
Traffic vs. Patrol Investigations .....	4
Pedestrian Accidents .....	9
Bicycle Accidents .....	10
DWI Accidents .....	11
Hit and Run Accidents .....	12
Monetary Loss .....	12
Police Vehicle Accidents .....	12
 TRAFFIC ENFORCEMENT	
Traffic Patrol .....	13
Enforcement Totals .....	15
DWI Enforcement .....	16
Hit and Run Investigations .....	18
Parking Enforcement .....	18
Post-accident Enforcement .....	19
Other Enforcement .....	19
 CALLS FOR SERVICE .....	 20
SPECIAL EVENTS .....	21
SAFETY – RESTRAINT .....	22
TRAFFIC SAFETY .....	23
 ANNEX A - Summary: 1991 Annual Traffic Statistics	
 ANNEX B - 1991 Eastside DWI Task Force Holiday Emphasis Statistics	

## 1991 ORGANIZATIONAL CHART

The Traffic Section was organizationally relocated to the Operations Division effective March 1, 1991. This change placed all uniformed line functions within the same Division and serves to promote increased coordination between Sections.



\*Assigned from the Staff Support Section

## OVERVIEW

The Department investigated 1,488 traffic accidents, a 17% decrease compared to 1990. The Traffic Section investigated 84% of the total accidents. 1,133 citations were issued as a result of investigated accidents.

There were no fatal accidents, the first year since 1972 that there had not been at least one person killed in a traffic accident. Since 1972, an average of three persons have been killed each year with a high of nine deaths in 1979 and seven in 1982.

Total injury accidents decreased by 12%. All reported injuries totaled 701, a 9% decrease from 1990 and 9% decrease from the previous 3-year average.

A total of 24,005 traffic citations were issued, with the Traffic Section accounting for 85% of the total.

497 DWI arrests were made, a 14% increase compared to 1990. DWI accidents decreased by 17% over the same period.

The Department continued to take the lead in the joint Eastside police DWI emphasis patrols. Six emphasis patrols were conducted prior to the Christmas holidays resulting in 94 DWI arrests. During the holidays the patrols accounted for 112 arrests in 12 days (nine arrests/day). The strategy of multi-agency patrols received state-wide interest and has resulted in the formation of emphasis patrols elsewhere (e.g., South King County Task Force).

The Department joined with MADD and Aetna Insurance in the "Eye on DWI Program" by accepting a donation of three video cameras used for recording DWI arrests. Thirty-one arrests were taped.

Lieutenant Jack Davis and Officer Rick Strocsher received recognition from King County MADD for outstanding achievement in DWI enforcement. Officer Strocsher's award was for his high level of arrests (36), while Lieutenant Davis was recognized for suggesting, implementing and coordinating the Eastside emphasis patrols.

Traffic officers responded to 1,952 parking complaints and 4,440 miscellaneous traffic service complaints.

588 persons attended the Department's seat belt education class. The 2-hour class is provided to seat belt law violators in lieu of their paying a \$47.00 fine. Officer Jim Hershey was recognized by the Washington Traffic Safety Commission for implementing the class. It is being used as a model for other agencies throughout the State.

The Department was named to the safety belt "70% PLUS Honor Roll" by the U.S. Department of Transportation in recognition of a safety belt use rate of greater than 70%. Observational surveys revealed 92% + of Department employees used seat belts in City-owned and private vehicles.

Officer Jene Ladke produced a seat belt educational poster which shows a Bellevue police officer and a Seattle Seahawks football star with a "Buckle Up" message. Officer Ladke secured \$7,000 in donations from traffic safety organizations which resulted in printing 15,000 posters.

The Traffic Section planned, coordinated and participated in 14 community special events.

Officers Keith Schenkel and Jim Hershey received awards for motorcycle operations from the Washington Oregon Motorcycle Officers Association at their annual conference. Officer Schenkel was the 1st place Washington State rider; he and Officer Hershey won the 1st place team award. There have been no police motorcycle accidents since November 14, 1989.

## TRAFFIC ACCIDENTS

### Total Accidents

1,488 accidents were investigated by the City of Bellevue in 1991. This was a 17% decrease compared to 1990.

### Fatal Accidents

For the first year in nearly two decades, the City of Bellevue did not record a traffic death. 1991 was the first year since 1972 that a person has not been killed in a traffic accident. Since 1972, an average of three people have been killed each year with highs of nine in 1979 and seven in 1982.

### Injury Accidents

There were 486 injury accidents investigated in 1991, a 12% decrease compared to 1990 and a 12% decrease compared to the previous 3-year average. All reported injuries totaled 701, a 9% decrease from the previous 3-year average.

### Property Damage Only Accidents

There were 1,002 property damage only accidents investigated in 1991 a 20% decrease from 1990.

### Street vs. Private Property Accidents

Of the 1,488 accidents investigated, 97% (1,445) occurred on City streets and 3% (43) occurred on private property.

### Traffic vs. Patrol Investigations

A Traffic Section goal is to investigate 85% of all accidents reported in a calendar year. In 1991, Traffic investigated 84% and Patrol, 16% of the total. This compares to 82% by Traffic and 18% by Patrol in 1990.



TOTAL ACCIDENTS FOUR-YEAR COMPARISON						
Impact	Year				Previous 3-year Average	% of Change 91 - 3-Year Average
	1991	1990	1989	1988		
Total Accidents (1990 vs. 1991 only)	1,488 1,488	1,806* 1,806	2,269	2,341	2,139	- - 17%
Fatal Accidents	0	3	3	3	3	- 100%
Total Killed	0	3	3	4	3	- 100%
Injury Accidents	486	550	570	548	556	- 12%
Total Injured	701	772	790	765	776	- 9%
Property Damage Only Accidents	1,002	1,256	1,699	1,793	1,583	- 20%
Total Street Accidents	1,445	1,769	1,712	1,806	1,762	- 17%
Total Private Property Accidents* (1990 vs. 1991 only)	43 43	48 48	557	535	376	- - 10%
Accidents Invest. By Traffic	1,254	1,481	1,816	1,948	1,748	- 28%
Accidents Invest. By Patrol	231	325	453	393	390	- 40%

\* Effective January 1, 1990, Department policy changed to investigate private property accidents involving only death, possible death, DWI, or damage to City property.

**SEVERITY RATE  
TOTAL ACCIDENTS BY PERCENT  
1988 - 1991**

