

**BELLEVUE
POLICE DEPARTMENT
BELLEVUE, WASHINGTON**

1966

ANNUAL REPORT

BELLEVUE POLICE DEPARTMENT

Captain H. E. Conroy
Traffic Division

ANNUAL REPORT

FOR THE YEAR

1966



N. J. GIARDINA
CHIEF OF POLICE

TABLE OF CONTENTS

Captain H. P. Gierney
Traffic Division

City of Bellevue Public Officials	page 3
City of Bellevue General Information	page 4
City of Bellevue Map	page 5

SECTION I

DEPARTMENT ORGANIZATION AND PERSONNEL

Law Enforcement Code of Ethics	page 7
Chief's Message	page 8 - 9
Organization Chart	page 10
Patrol Division	page 11
Traffic Division	page 12
Detective Division	page 13
Services Division	page 14
Personnel by Position	page 15 - 16
Personnel Changes	page 17

SECTION II

STATISTICAL INFORMATION

Complaints - Personnel Strength	page 19
Complaints - Personnel Strength Graph	page 20
Budget Allowance	page 21

TABLE OF CONTENTS (CONT)

Complaints - Arrests Graph	page 22
Complaints - Arrests	page 23 - 28
Complaint Zone Map	page 29
Complaint Breakdown	page 30 - 31
Arrest Breakdown	page 32 - 33
Accidents Citation Graph	page 34
Motor Vehicle Accidents	page 35 - 36
Traffic Enforcement	page 37
Miscellaneous Activity	page 38
Man Hours Distribution	page 39 - 40
Vehicle Operation	page 41

CITY OF BELLEVUE

PUBLIC OFFICIALS

COUNCIL:

Clarence F. Wilde - Mayor

Kenneth A. Cole

Kenneth A. Gates

Scott McDermott

Kenneth E. Sivula

Robert J. Meagher

William H. Biggs

CITY MANAGER:

L. Joe Miller

JUDGE:

Melvin V. Love - Bellevue District Justice

CITY ATTORNEY:

Joseph S. Miller

CIVIL SERVICE COMMISSION:

Willard A. Gallotte - Chairman

Arthur C. Evered

John F. Doorish

CITY OF BELLEVUE
GENERAL INFORMATION

INCORPORATED:

March 31, 1953

GOVERNMENT:

Council - Manager

LOCATION:

On the east side of Lake Washington directly across from the City of Seattle to which it is connected by two floating bridges.

AREA:

11.6 square miles with 114 miles of public streets

POPULATION:

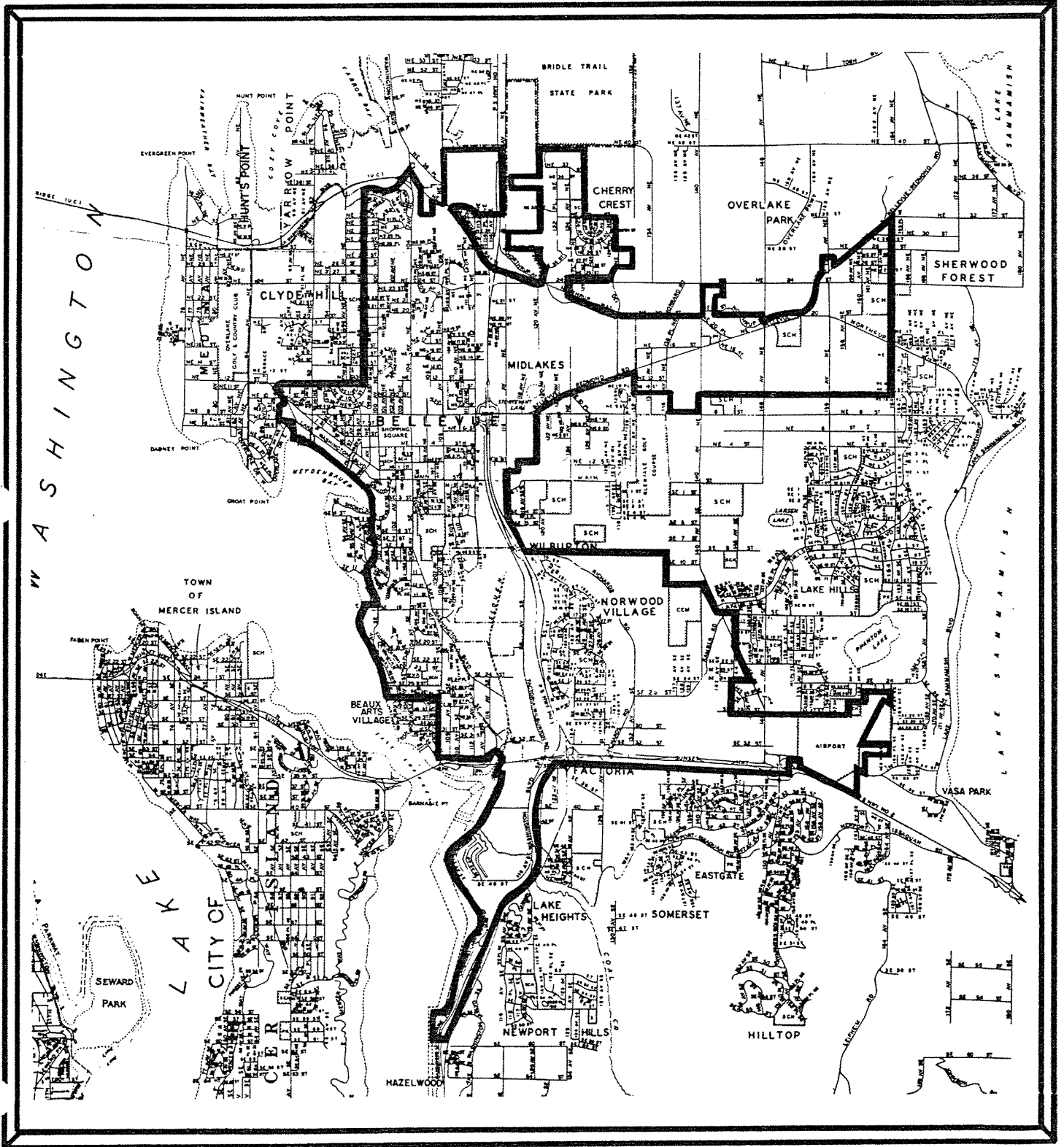
20,600

CHARACTER:

The City of Bellevue is the rapidly expanding center of business and residential development on the suburban "East Side" of metropolitan Seattle.

CITY OF BELLEVUE

1966



SECTION I

DEPARTMENT ORGANIZATION
AND
PERSONNEL

Law Enforcement Code of Ethics

As a Law Enforcement Officer, my fundamental duty is to serve mankind; to safeguard lives and property; to protect the innocent against deception, the weak against oppression or intimidation, and the peaceful against violence or disorder; and to respect the Constitutional rights of all men to liberty, equality and justice.

I will keep my private life unsullied as an example to all; maintain courageous calm in the face of danger, scorn, or ridicule; develop self-restraint; and be constantly mindful of the welfare of others. Honest in thought and deed in both my personal and official life, I will be exemplary in obeying the laws of the land and the regulations of my department. Whatever I see or hear of a confidential nature or that is confided to me in my official capacity will be kept ever secret unless revelation is necessary in the performance of my duty.

I will never act officiously or permit personal feelings, prejudices, animosities or friendships to influence my decisions. With no compromise for crime and with relentless prosecution of criminals, I will enforce the law courteously and appropriately without fear or favor, malice or ill will, never employing unnecessary force or violence and never accepting gratuities.

I recognize the badge of my office as a symbol of public faith, and I accept it as a public trust to be held so long as I am true to the ethics of the police service. I will constantly strive to achieve these objectives and ideals, dedicating myself before God to my chosen profession . . . law enforcement.

CHIEF'S
MESSAGE



Mr. L. Joe Miller, City Manager
City of Bellevue, Washington

Dear Mr. Miller:

Submitted herewith is the 1966 Annual Report of the Bellevue Police Department.

As predicted at the end of 1965, in which an unprecedented activity increase was experienced, the year 1966 continued still higher with a 22.7 % further increase and this trend may be expected to proceed upwards as a reflection of the explosive development in the City of Bellevue and Greater Bellevue area, particularly since 1963.

It is imperative that we meet the expanded demands for service with proportionate increases in personnel and equipment but I must point out that it is becoming increasingly difficult to recruit and retain the superior young men whom we attempt to attract for police service. Effective protection costs money and in the competition with private industry for the best people, we must be financially able to offer the incentives of higher income, improved working conditions and other benefits that will attract career applicants to

public service.

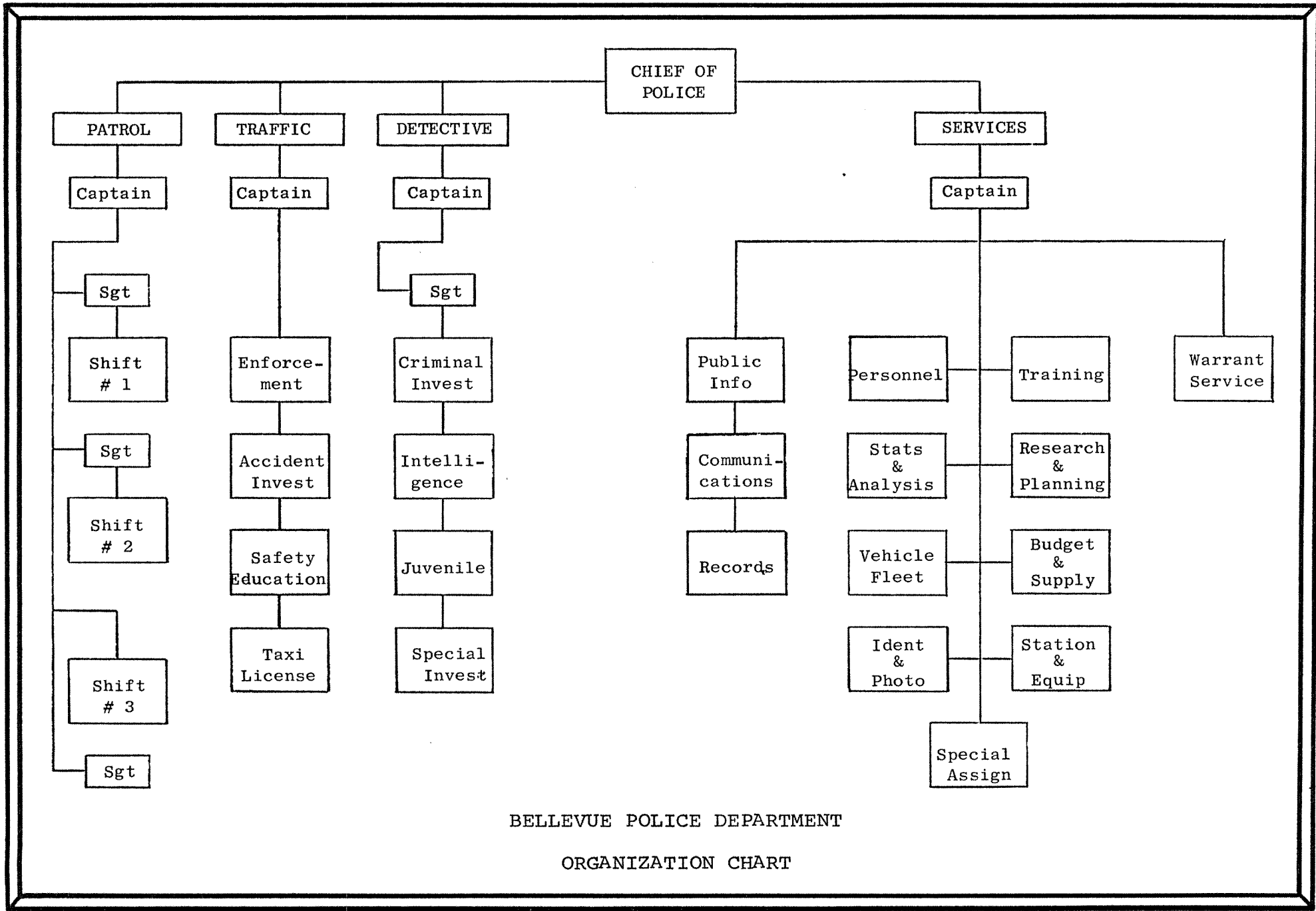
In addition to material and personnel resources, we must also have the resolute, and sometimes vocal, support of the community, if we are to succeed in maintaining the security necessary for a healthy social climate in which we can all live, prosper and raise our children.

As always, the Bellevue Police Department will continue to operate in purposeful dedication to the protection of the lives, rights and property of our citizens and I wish to commend the members of my staff for their unselfish pursuit of this goal.

Respectfully submitted,

A handwritten signature in cursive script, appearing to read "N. J. Giardina".

N. J. Giardina, Chief of Police



BELLEVUE POLICE DEPARTMENT

ORGANIZATION CHART

PATROL
DIVISION




The Patrol Division is the largest and oldest Division in the Bellevue Police Department and its function can be broadly described as the protection of life and property, preservation of the public peace and the protection of individual rights.

The Division, which is the primary component of the Department, is responsible for twenty-four hour coverage of the City and as such, it is supplemented by the Traffic, Detective and Services Divisions.

The Division's responsibility is divided into four sections and these are: regulation, investigation, general services and prevention. The regulation function involves enforcement of all criminal laws. The investigative function involves preliminary investigation of crime scenes, investigation of traffic accidents and inquiry into a myriad of other police calls. The general services function involves everything from providing life saving first aid to silencing a barking dog. The preventive function involves the use of professional patrol techniques to reduce criminal activity or other conditions requiring police control.

The Patrol Division strives to provide a high level of public service wherever and whenever required.


F.M. Anderson, Captain

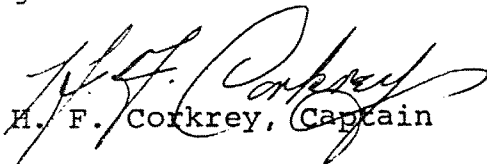
TRAFFIC
DIVISION



The Traffic Division was created by order of the Chief of Police in August, 1965 to accommodate the increase in traffic activity within the jurisdiction of the Bellevue Police Department, particularly in the category of vehicle accidents.

The Division is responsible for the promotion of traffic safety and strives to accomplish this function by enforcement of accident causing violations, consultation with the Engineering Department on needed improvements in the traffic pattern, participation in the high school driver education programs, assistance with the School Safety Patrol program and talks to various citizen groups. In spite of such efforts, accidents continue to occur and these are investigated to determine causes. The investigation is intended not only to assign liability, but also to discover means by which similar future accidents can be prevented. Prevention of accidents is the primary responsibility of the Division and constitutes its reason for existence.

The Traffic Division maintains an accident records section which indicates areas of need and operational effectiveness so that available resources will be applied where they will gain the most beneficial results.


H. F. Corkrey, Captain

